

ARTHUR TAUBER, N.Y.U. FENCING STAR, DEMONSTRATES FOUR OF THE EIGHT STANDARD PARRIES THAT CAN BE MADE WITH THE EPEE, ALL STARTING FROM EN GARDE POSITION

## N.Y.U.'S LEFT-HANDED ARTHUR TAUBER IS BEST COLLEGIATE SWORDSMAN

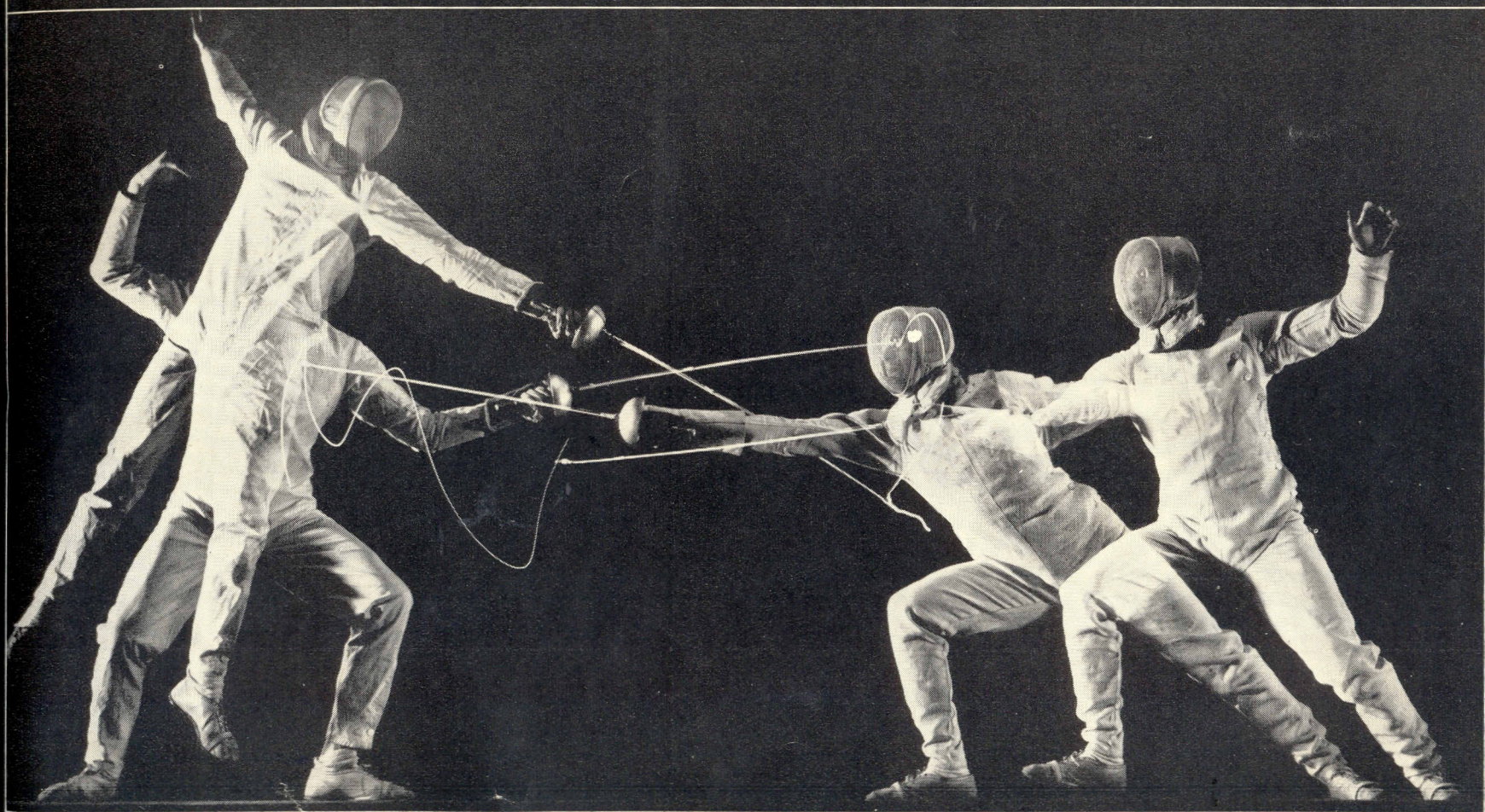
**E**ight times in the past ten years New York University has won the Intercollegiate Fencing Association team championship. This mastery is due in part to the wily instruction of Coach Julio Martinez Castello, in part to the skill of such star pupils as Arthur Tauber. A gangling 6 ft. 2½ in. southpaw from The Bronx, Tauber is a fencing freak because of his height, his left-handedness and his versatility. Most expert swordsmen specialize in one of the three traditional weapons of fencing: foil, epee and saber.

This year in the intercollegiates, Tauber competed in all of them, fencing 45 bouts. In his sophomore year Tauber won the epee title; last year he won it again, took second in foils; this year he won the foils title and, due to near exhaustion, lost the epee crown in a fence-off.

In costume movies fencing is spectacular and swashbuckling. In these repetitive flash pictures of Tauber and his teammates by Gjon Mili, the fencing is still spectacular—but it is also technically precise.



TAUBER (LEFT) EXECUTES LEAPING STOP THRUST TO EVADE TEAMMATE SEYMOUR GROSS'S ATTACK, SCORING TOUCH WITH TIP OF EPEE ON GROSS'S ARM AS LATTER'S LUNGE FAILS



CONTINUED ON NEXT PAGE 97



# Fencing (continued)



IN SABER BOUT TAUBER (LEFT) PARRIES SOL GORLIN'S ATTEMPTED HEAD



CUT, STEPS ASIDE TO EVADE ATTACK, THEN RIPOSTES TO SCORE CHEST TOUCH





TAUBER (LEFT) TRIES EPEE ATTACK TO LEG. GROSS PARRIES AND SCORES

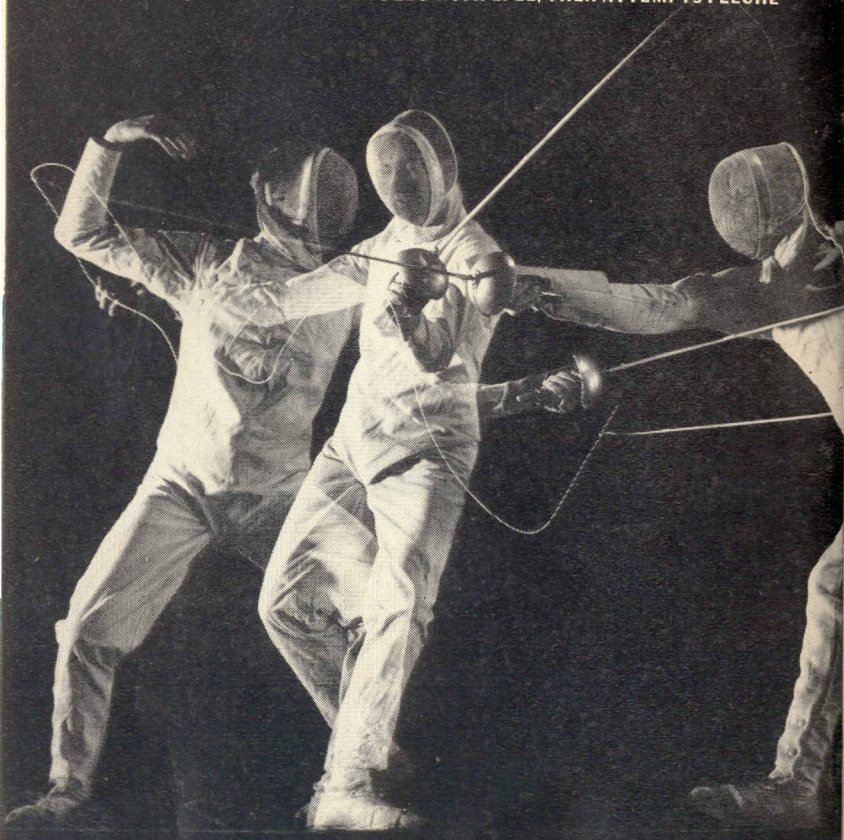


STOP-THRUST ON ARM. EPEE TOUCHES ARE VALID ON ANY PART OF THE BODY



PROSEN (LEFT) TRIES EPEE ATTACK TO LEG. GROSS PARRIES AND SCORES

GROSS (RIGHT) FEINTS AT TAUBER'S LEG WITH EPEE, THEN ATTEMPTS FLECHE



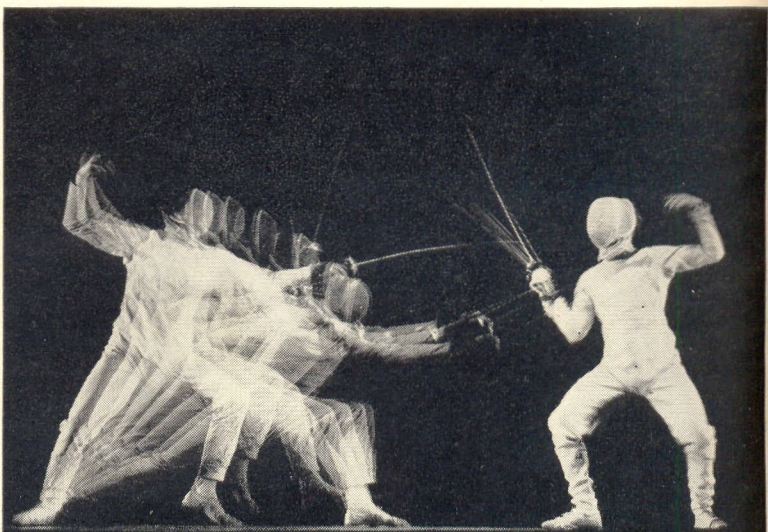
(RUNNING ATTACK). TAUBER PIVOTS, TURNS POINT ASIDE WITH SIMPLE PARRY



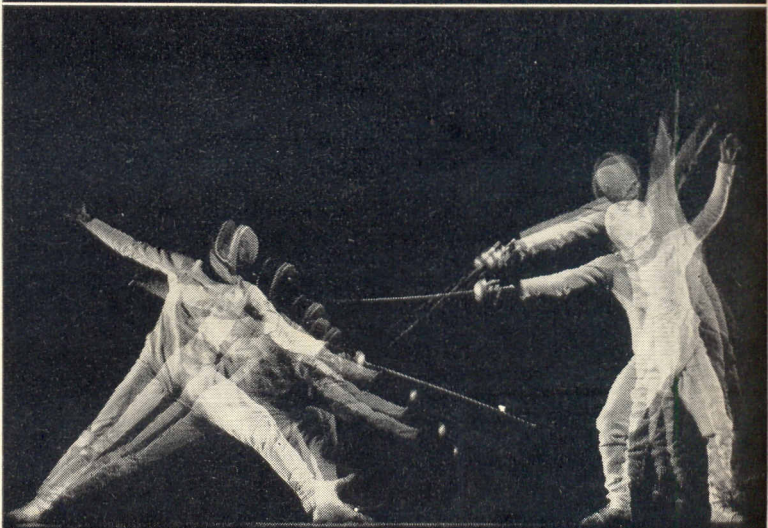
CONTINUED ON NEXT PAGE



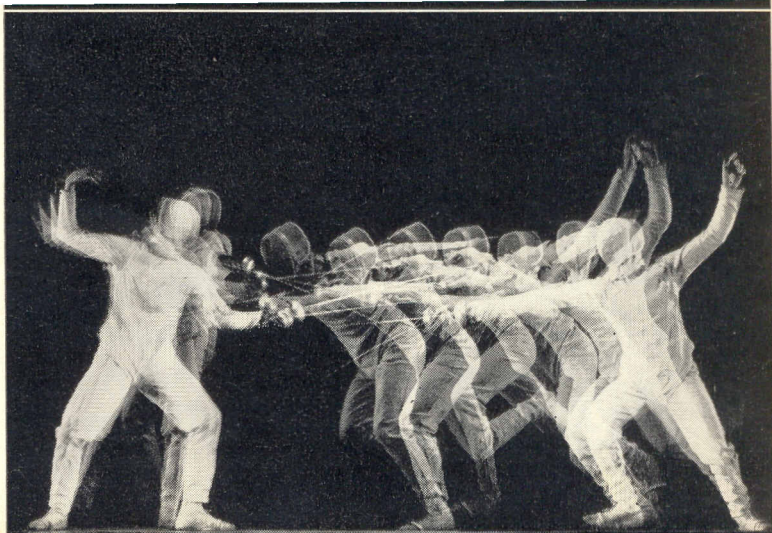
## Fencing (continued)



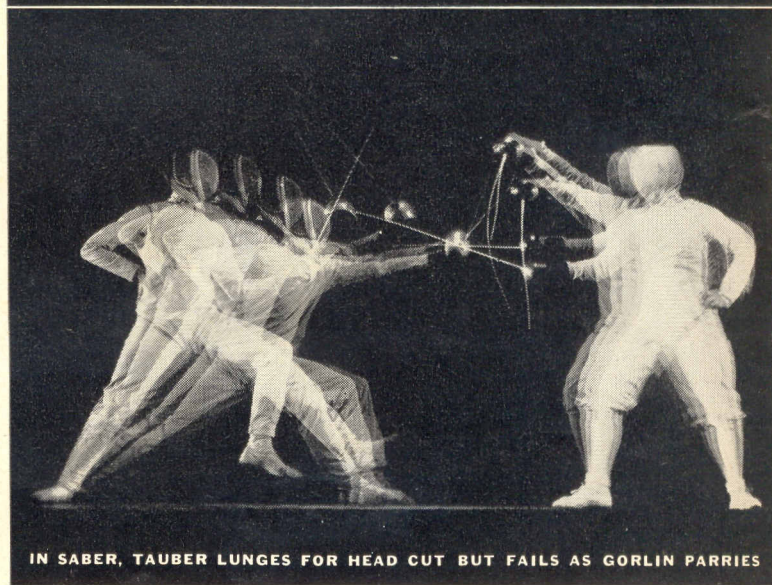
TAUBER (LEFT) TOUCHES BY RAISING FOIL OVER GROSS'S ORIGINAL PARRY



TAUBER ATTACKS TO FOOT. GROSS'S EPEE TOUCHES ARM WITH STOP-THRUST



**GROSS LAUNCHES FLECHE, TAUBER STANDS GROUND AND PARRIES ATTACK**



**IN SABER, TAUBER LUNGES FOR HEAD CUT BUT FAILS AS GORLIN PARRIES**



Quality  
carries on



5¢

Drink  
*Coca-Cola*

TRADE MARK REG. U. S. PAT. OFF.

Delicious and  
Refreshing